



## AAC Publications

---

### **Mt. Redoubt and Easy Mox, Winter Ascents**

Washington, North Cascades

Nick Roy on the northeast ridge of Easy Mox in January 2025. Photo by Eric Gilbertson  
**Despite the name, Easy Mox (8,397', 48.948747, -121.262656)** is considered one of the most difficult of the Bulgers (Washington's 100 highest peaks) to climb in winter. It is located in the Chilliwack group of the Skagit Range, near the Canada border. I'd previously climbed four Bulgers in this area in winter (Hard Mox, Spickard, Custer, and Rahm), over four separate trips. By 2025, just Easy Mox and Mt. Redoubt (8,963', 48.95782, -121.300744) remained.

On January 17, Nick Roy and I double-carried my Zodiac boat, outboard motor, and four days of supplies one mile to Ross Lake (which has no road access) and cruised 18 miles to the outlet of Silver Creek the next day. It was cold enough for spray from the lake to freeze into verglas on our dry suits.

We hiked up an abandoned mining trail to the remnants of a cabin, then bushwhacked up past Silver Lake to base camp on the north side of Solitude Peak. On day three, we climbed Mt. Redoubt via the standard south face, making the second winter ascent of the peak (after R. Barley and P. Rowat, in February 1977, via the northeast face) and the first winter ascent of this route (M1 and steep snow, with two roped pitches). We rappelled the route.

The next morning, we climbed steep, unconsolidated snow and rock to the Easy Mox–Solitude Col, then simul-climbed the northeast ridge of Easy Mox. Nick led the crux M3 pitch to the summit. Rather than downclimb the long, low-angle ridge—which would have required setting up many rappel anchors on vertical rock steps—we made sunset rappels down the established south face descent to Col of the Wild. We then hiked around the west and north sides of Easy Mox back to camp.

On January 21, we hiked back to Ross Lake, found some unfrozen water to launch the Zodiac, motored back, and triple-carried the gear back to the trailhead. By the end of winter 2025, I'd climbed 83 Bulgers in winter.

—Eric Gilbertson

## Images



Nick Roy at the M1 crux on the south face of Redoubt.



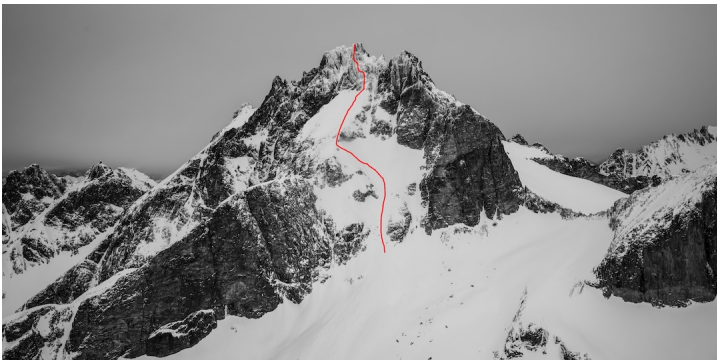
Nick Roy on the northeast ridge of Easy Mox in January 2025.



Eric Gilbertson and Nick Roy made the first winter ascent of Easy Mox on January 20, via the northeast ridge.



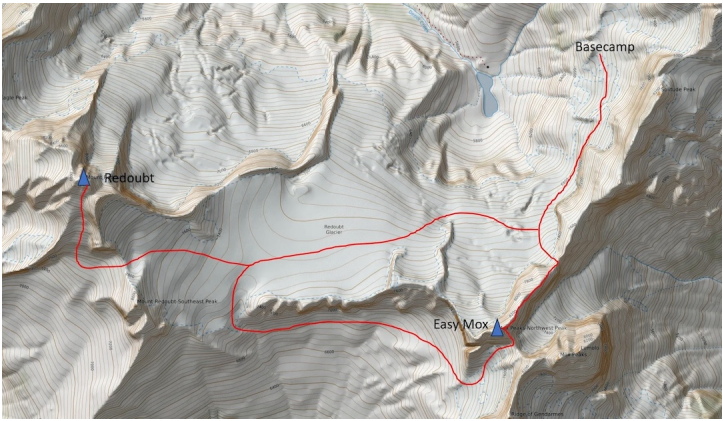
The ascent (red) and descent (green) paths followed by Eric Gilbertson and Nick Roy during their first winter ascent of Easy Mox.



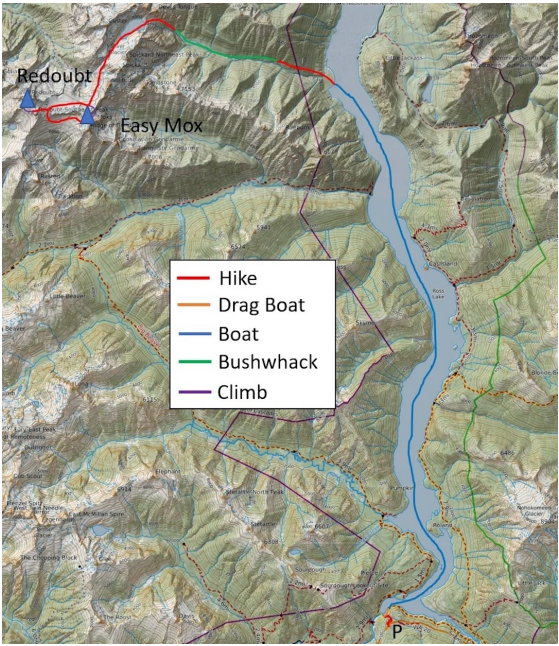
The standard south face line followed by Eric Gilbertson and Nick Roy during their January ascent of Redoubt, the second overall winter ascent of the peak.



Nick Roy leading the M3 crux just below the summit of Easy Mox during the first winter ascent with Eric Gilbertson.



Map showing the routes climbed for the winter ascents of Easy Mox and Redoubt in the Skagit Range.



Map showing the approach to the Skagit Range for winter ascents of Easy Mox and Redoubt in January 2025. .

## Article Details

|                |                        |
|----------------|------------------------|
| Author         | Eric Gilbertson        |
| Publication    | AAJ                    |
| Volume         | 67                     |
| Issue          | 100                    |
| Page           |                        |
| Copyright Date | 2026                   |
| Article Type   | Climbs and expeditions |