



AAC Publications

Pik Skobelev, North Slopes of West Top

Kyrgyzstan, Pamir Alai, Kichik-Alai

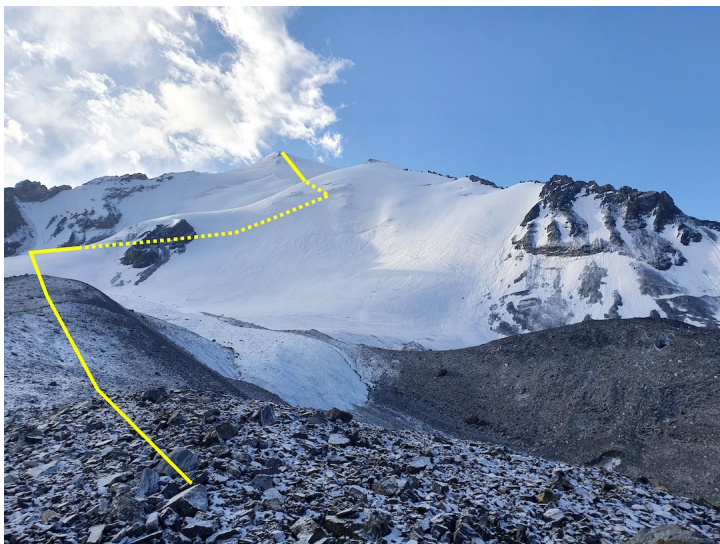
In August I led a team to the Kumtor area, where we climbed two summits in 2018 (see AAJ 2019).

This time, we climbed the western top of the range's highest mountain, Pik Skobelev (5,051m, 39°47'33"N, 72°37'01"E), by what might be a new route. We followed a glacier coming down from Skobelev's north face and then up to the western shoulder, reached by a short, steep section with a bergschrund. From there we proceeded directly to the western top (4,986m) after a tiring ascent through fresh snow, with short sections of ice up to 35° (Russian 1B). We were thankful it had snowed every day for a week, because in dry weather the slope would be an ice shield and much more difficult.

From the western top you could follow the heavily corniced ridge to the main summit (perhaps two hours), but we did not try this. The team comprised myself leading Stanislav Cmiel, Marketa Rusniokova, Rostislav Slouf, Tomas Walach, and Lucie Zaklasnikova.

— **Michal Kleslo, Czech Republic**

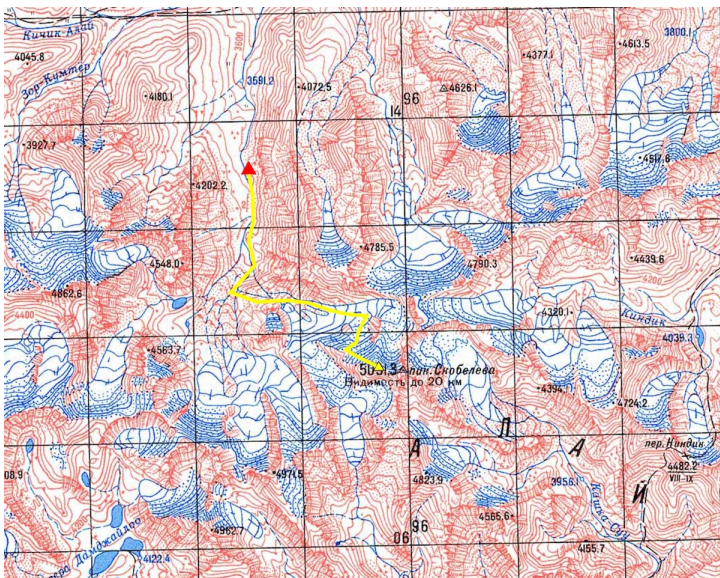
Images



The route up Skobolev West in the Kichik-Alai.



Climbing the 2021 route up Pik Skobolev West in the Kichik-Alai.



Map showing the approach and route up Pik Skobelev West in the Kichik-Alai.

Article Details

Author	Michal Kleslo
Publication	AAJ
Volume	64
Issue	96
Page	248
Copyright Date	2022
Article Type	Climbs and expeditions