



AAC Publications

Cerro de la Ramada, South-southeast Ridge

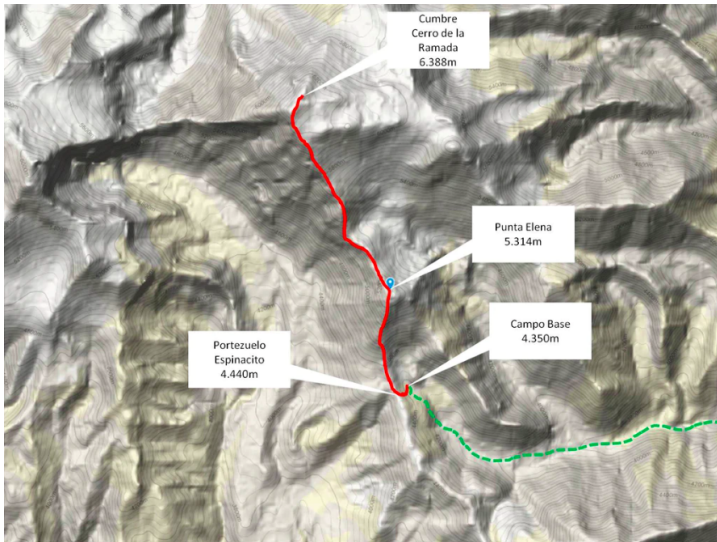
Argentina, Central Andes

Cerro de la Ramada (6,384m) had just two routes (both from the north via the Rio Colorado) prior to my ascent over March 24–26, 2019. The mountain is located in a glacial cirque about 10km southeast of Cerro Mercedario (6,720m) and about 100km north of Aconcagua. My idea was to climb the first route from the south. Finding a suitable approach to the south side took some prior investigation on Google Earth and onsite reconnaissance in November 2018.

In March, I approached with horses via the Valle de las Lenas, close to Portezuelo de Espinacito, in perfect weather. Starting from a base camp at 4,350m, I set one additional high camp at 5,200m. The next day, March 25, I followed the south-southeast ridge to the summit. My GPS showed an elevation of 6,388m. Overall, it was an easy climb, with some scrambling on rotten rock, snow, and ice; however, it was long and time consuming, with about 2,000m of vertical gain.

– **Christian Stangl, Austria**

Images



An overview of Christian Stangl's 2019 route up Cerro de la Ramada (6,384m) from the south.

Article Details

Author	Christian Stangl
Publication	AAJ
Volume	62
Issue	94
Page	
Copyright Date	2020
Article Type	Climbs and expeditions