



AAC Publications

Kosh Moynok Valley, First Ascents

Kyrgyzstan, Pamir Alai, Kichi Alai

Our group of six Czech and Slovak climbers visited the Kosh Moynok valey of the Kichi Alai mountains (a.k.a. Kichik Alai) in September. Approaching from the Kichi Alai valley, we reached base camp at ca 3,400m in two days. From here we climbed three peaks with no sign or record of previous ascents. Stanislav Ceip and Ondrej Uher climbed the northeast face and north ridge of the northern of two peaks southwest of base camp, which they called Palestra Peak (4,750m). Tibor Majer, Stefan Matuska, and I climbed 70th Anniversary of SNU Peak (4,880m), winding up a glacier from the north, with steep ice and powder snow near the top. Vladimir Bures and Matuska climbed Bars Peak (4,880m) via 400m of ice up to 50° on the west side, then followed the north ridge to the top.

Michal Kleslo, Czech Republic

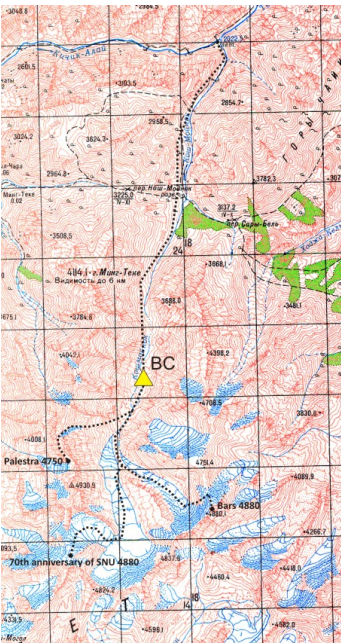
Images



70th Anniversary of SNU Peak (4,880m).



Bars Peak (4,880m) from the northwest.



Map of peaks climbed by 2015 Czech expedition.



Palestra (4,750m).

Article Details

Author	Michal Kleslo
Publication	AAJ
Volume	57
Issue	89
Page	259
Copyright Date	2015
Article Type	Climbs and expeditions